

PHOTOGRAPHIC RECORD

Auburn House, Malahide, Co. Dublin.

for

Kinwest Ltd.,

April 2022



THE MAIN HOUSE:



Fig 1: Front (east facing elevation) showing 5 bay 2 storey over basement elevation with attic storey. Later alterations include porch and front steps; widened dormer windows to attic and new Billiard Room wing of 1907 to the right and set back. Embellishments to window surrounds and eaves.



Fig 2 & 3: Elevations (south facing - left above) and north facing (right – above Fig 3): variable fenestration patterns and note that the ground floor windows to the front room of the north side elevations and the rear ground floor window of the south facing elevation are blind windows.



Fig 4: Views above to the rear (west facing) elevation showing the more formal disposition of windows without the yard (above left) and the more functional arrangement within the yard (above right Fig 5).



Detail above (Fig 6) of the dormer window with its prominent moulded pediment and unusual Wyatt type format and a detail of the open porch (above right Fig 7) and steps which were added most likely in the late 19th century or early 20th century.



Details above of the original door-case (Figs 8 and 9 - above left and right) held within the later porch. Ionic capital and decorative elements reveal to the fanlight. Pilasters (top right - Fig 9) appear to have been restored recently. Further details Fig 10 and 11 below



Fig 12 Detail above of the later steps with granite stone balustrade and pillar. Paired pilasters are applied to the porch. Side view (below - Fig 13) with pilasters carried to the side elevation of the porch articulating the surfaces above moulded string course above vaulted below porch.

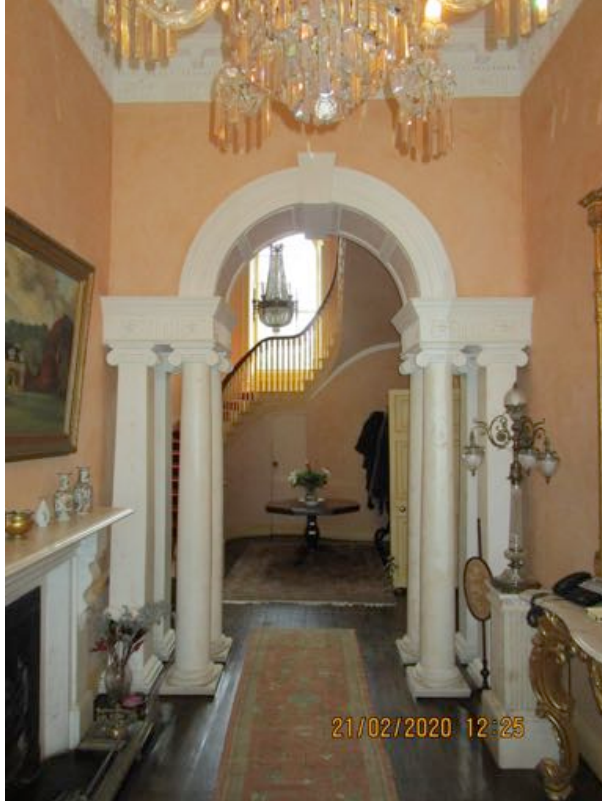


THE BILLIARD ROOM WING (1907) Fig 14



External views above of the 1907 Billiard Room Wing - main entrance elevation (east facing – Fig 14) where it adjoins the main house. Bay window with modern timber window. Details below right and left (Figs 15 and 16) of the end gable with rock faced ashlar and bracketed eaves. Part stone and part render end chimney.

INTERIOR OF MAIN HOUSE



Views above the Entrance Hallway (GF-01) with quadruple columns formed of circular and square columns supporting a decorated frieze below the archway. White marble chimneypiece and fine original joinery at the inner face of the entrance door. (Figs 17, 18, 19, and 20 – clockwise from top left corner)



Fig 21 - Staircase Hall (GF-05) with superb barley sugar balusters and curtail step (above right) with turned newel post and tread end detail (Fig 22 – below left) with decorated scroll (below right - Fig 23).





Fig 24 above and Fig 25 below) General view above of Drawing Room (GF-02) with excellent original joinery, plasterwork and chimneypiece.



(Fig 26 above) Detail of elegant raised decoration on door frieze with scrolled foliate and floral swag detail. General view Below (Fig 27) of the Dining Room (GF-11) with chimneypiece in the same style as the Drawing Room. Curved and arched recesses to either side with jib door and decorated frieze to cornice.



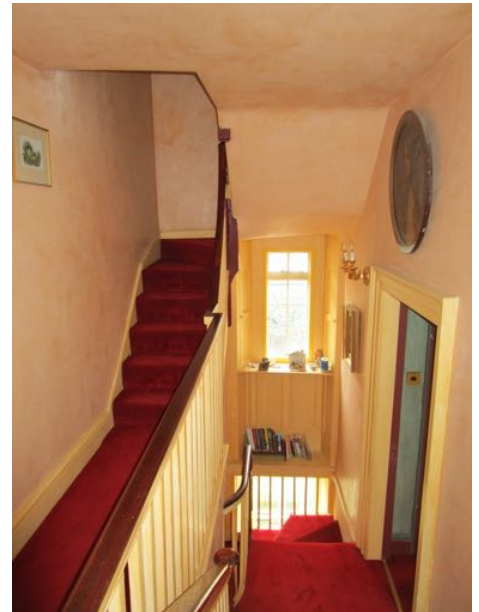


View of Sitting Room Fig 28 above (GF-03) above with details of shell plaster motif (Fig 29 below left) within curved recesses
To either side of mantelpiece and detail of dado rail (Fig 30 – below right).





View (Fig 31 above) of modern kitchen - Room GF-08 - with modern conservatory (GF-09 – Fig 32) to the rear which links to the rear stable yard and to the 1907 Billiard Room wing. View (bottom right – Fig 33) of the simpler joinery of the secondary staircase (GF-06) leading to the upper floors and basement.



The Billiard Room Wing - Interior.



Fig 34 – above Interior of the Billiard Room wing of 1907 with modern wall painting; large skylight (above left – Fig 35) with plaster decoration and hardwood mantelpiece with integrated mirror and richly modelled hardwood carving (Fig 36 – lower left).

FIRST FLOOR



Views above of the staircase (FF-07 – Fig 37) from the half landing and main landing (above -Fig 38) with arched connection between staircase and main landing (FF-01) with view down (Fig 39 – below centre left) towards ground floor. Typical door detail with 6 panelled door (Fig 40 – below centre right)



Figs 41 and 42 – bottom left – Typical cornice detail with no embellishment and later timber chimney piece (bottom row right) with art nouveau insert.



Eighteenth century chimneypiece with stone insert (Fig 43 above left); arched recess on main landing with study room (FF-11) (Fig 44 – above right); Fig 45 – Below left- room on half landing off secondary staircase at mezzanine level with hardwood chimneypiece (Fig 46 – below right) - likely dating from the time of the 1907 wing addition).



SECOND FLOOR



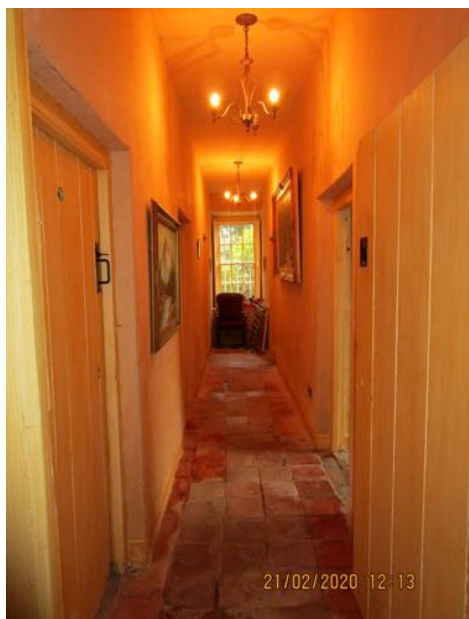
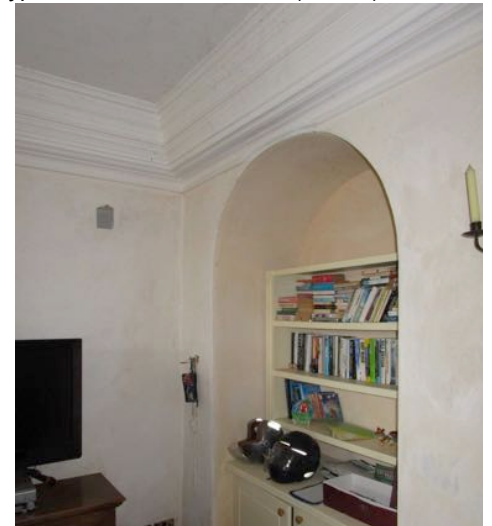
Figs 47, 48, 49, 50, 51 and 52 – clockwise from top row left: Details (Figs 47 and 52) of art nouveau metal chimneypieces and secondary staircase and typical second (attic) room with large dormer window and covered ceilings. Mezzanine bathroom (left). Internal roof valley below (Fig 50).



BASEMENT Figs 53, 54, 55, 56, 57 and 58 – clockwise from top left -



Access stairs (above left – Fig 53) and main hallway BM01 (Fig 54) ; granite fireplace in old kitchen (BM-03 – Fig 58) and heavy cornice in old kitchen ; Corridor (bottom left BM-06) and original chimneypiece in rear centre room (BM-06)



STABLE YARD - EXTERIOR



Views (above – Fig 59) of the south range and connecting west range and general view towards west range (below – Fig 60).





View (above- Fig 61) of the north range where the limestone is mixed with a warmer coloured stone (possibly a sandstone) and view (below – Fig 62) of the single storey connecting storage building and the rear of the main house.





Views (above – Fig 63 and below – Fig 64) to the entrance archway at the south wall of the stable yard.



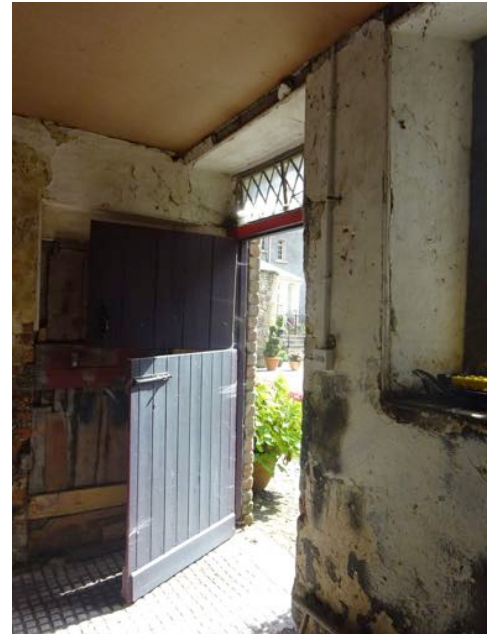


View above (Fig 65) of link building to rear of house and modern conservatory and steps and view (below) from rear service yard to south-west of stable yard structure. Modern dormer windows at roof level (Fig 66).





Internal views - above left (Fig 67) - interior of south range with floors missing; staircase detail (Fig 67) from north range - (below left – Fig 68) of stable box part of buildings with partially intact stone flag floor and detail of typical sheeted door and metal fanlight (Fig 69 – below right).





View above at first floor level (north range – Fig 70) of the stable yard buildings.

WALLED GARDEN - view below (Fi 71) of the long north side wall and drainage ditch.





View through pedestrian gate (Fig 72) across metal bridge towards north section of subject part of the walled garden ; view (below left – Fig 73) of walled garden stone boundary constructed in coursed limestone rubble towards north-east tower and view from inside walled garden of the north-west corner tower or bastion. (Fig 74 – lower right).





View from north-west corner tower towards ditch (Fig 75) and stone wall; view (above right) of headstones (Fig 76) in the small pet cemetery; view (below left) of the pedestrian gate (Fig 77) between this section of the walled garden and the neighbouring section and view of the restored south-east corner tower (Fig 78- NB: not part of the application site).





View of the more ruinous corner bastion at the south west corner of the walled garden (Fig 79).

ENTRANCE GATES



The entrance gates are in their original position with convex quadrant walls and are rendered masonry with plain granite cappings and modern wrought iron gates (Fig 80 – general view above and Figs 81 – detail of gate pier and Fig 82 – flanking wall)